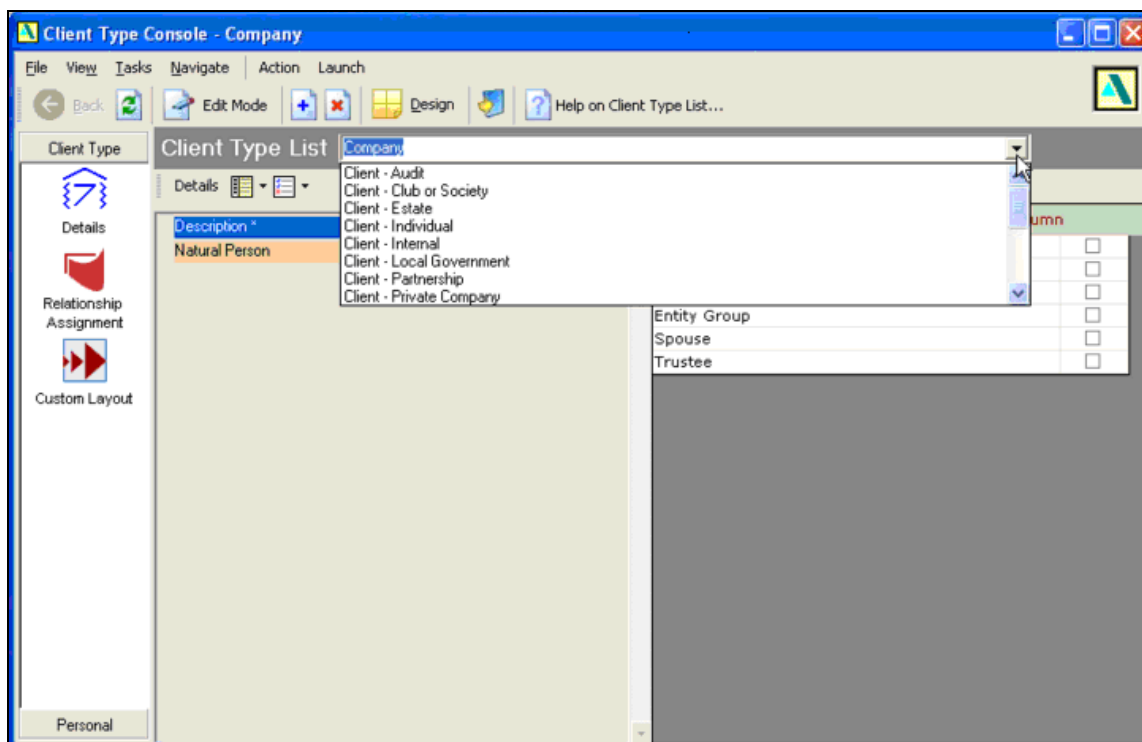


## Acclipse BenchmarkIT — APS Clients Not Displaying

Currently Acclipse BenchmarkIT only recognises clients with a standard entity type (eg *Company*, *Partnership*, *Trust*, *Sole Trader*, etc). If you are not using the standard entity types, you might not be able to see some or all of your APS clients in the *Select Accounting Software Client* window when you add a new client (despite being correctly integrated to APS and being able to import general ledgers). To resolve this, add the client details manually or change their entity type in APS to a standard entity.



Example of entity types currently not recognised by Acclipse BenchmarkIT.